

Contact Details and Addresses

Komfort Workspace plc Sales Offices - UK

Crawley

Whittle Way
Crawley
West Sussex
RH10 9RT
Tel: +44 (0)1293 592500
Fax: +44 (0)1293 553271
E-mail: general@komfort.com

Birmingham

Globe House
Parkrose Industrial Estate
Middlemore Road
Smethwick
Birmingham
West Midlands
B66 2DR
Tel: +44 (0)121 555 0300
Fax: +44 (0)121 555 0301
E-mail: midland-sales@komfort.com

Leeds

Unit T
Gildersome Spur Industrial Estate
Wakefield Road
Morley
West Yorkshire
LS27 7JX
Tel: +44 (0)113 201 3700
Fax: +44 (0)113 238 0447
E-mail: northern-sales@komfort.com

Edinburgh

The Hibernian Football Club Ltd
West Stand
12 Albion Place
Edinburgh
EH7 5QG
Tel: +44 (0)131 661 7010
Fax: +44 (0)131 661 5768
E-mail: scotland-sales@komfort.com

Andover Furniture Division

Screenbase House
Reith Way
West Portway
Andover
Hampshire
SP10 3LF
Tel: +44 (0)1264 332166
Fax: +44 (0)1264 333560
E-mail: sales.dept@screenbase.co.uk

Sales Office Republic of Ireland

First Floor
Block 43a
Park West Business Park
Nangor Road
Dublin 12
Tel: +353 (0)1 623 6179
Fax: +353 (0)1 623 6197
E-mail: dublin-sales@komfort.com

Door Furniture

www.komfort.com

Internet: www.komfort.com

National Specifier Support Line
Tel: 0870 241 0382

Show Suite Locations

Gatwick International
London – City
Birmingham
Edinburgh
Leeds
Manchester
Dublin

KOMFORT 
WORKSPACE

KOMFORT 
WORKSPACE

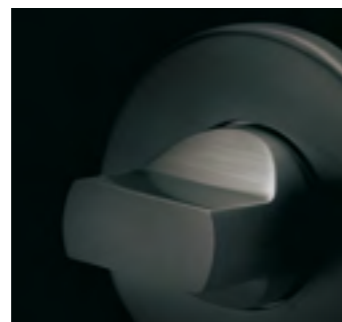
Door Furniture

This brochure contains a popular selection of Komfort's door furniture, from stylish lever handles to functional signs and symbols. Each piece is characterised by its high quality, distinctive design, ease of operation and tactility. Used individually or in any combination, our collection will provide the finishing touch to the most sophisticated new build or refurbishment project.

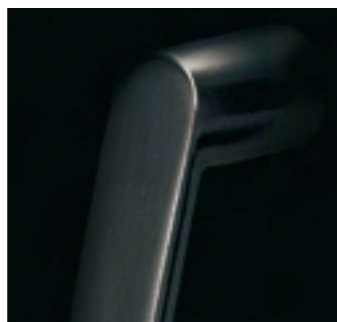
Contents



4 Lever Handles



6 Cylinders, Snibs, Releases & Escutcheons



8 Pull Handles



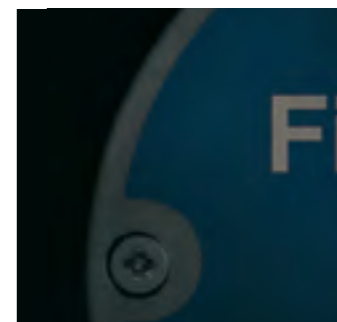
10 Locks & Latches



12 Door Closers & Stops



14 Push & Kick Plates



16 Signs & Symbols



18 Lever Handles in Nylon

Lever Handles

Komfort's range of lever handles encompasses most architectural trends from classic through to contemporary. They are available in various finishes and can be matched with the equivalent pull handles.

The illustrated stainless steel lever furniture is manufactured from Grade 316 material which is highly resistant to oxidization and corrosion.

A



B



C



D



A 5041

Available finishes:
Satin Stainless Steel
Polished Stainless Steel
Polished Stainless Steel Textured

Dimensions: 25mm diameter lever handle
on 5mm thick sprung round rose

B 5032/5040

Available finishes:
Satin Anodised Aluminium
Polished Anodised Aluminium
Satin Stainless Steel
Polished Stainless Steel
Polished Stainless Steel Textured
Polished Brass
Polish Brass Textured

Dimensions: 5032 – 19mm diameter lever handle
on 5mm thick sprung round rose
Dimensions: 5040 – 22mm diameter lever handle
on 9mm thick sprung round rose

C 5042

Available finishes:
Satin Stainless Steel
Polished Stainless Steel
Polished Stainless Steel Textured
Polished Brass
Polish Brass Textured

Dimensions: 19mm diameter lever handle
on 9mm thick sprung round rose

D 5043

Available finishes:
Satin Stainless Steel
Polished Stainless Steel
Polished Stainless Steel Textured

Dimensions: 13mm thickness lever handle
on 9mm thick sprung round rose

Cylinders, Snibs, Releases & Escutcheons

To suite with Komfort's lever handles and locks is a choice of practical yet elegant cylinders, snibs and escutcheons in both oval and European profiles. The items shown are manufactured from Grade 316 material which is highly resistant to oxidization and corrosion.

Oval Profile

Oval profile cylinders are available in standard lengths of 60mm and 70mm. Comes with 3 keys.



574 S/U & P/U

Available finishes:
Satin Nickel Plated
Polished Chrome Plated



574 Thumbturn



574 Cylinder



5152

Snib and indicator with 5mm spindle and emergency release mechanism

European Profile

European profile cylinders are available in standard lengths of 60mm and 70mm. Comes with 3 keys.



574E S/U & P/U

Available finishes:
Satin Nickel Plated
Polished Chrome Plated



574E Thumbturn



574E Cylinder



A 5093/5094

5093 – 5mm thick standard cylinder escutcheon to suit 5032 lever handle
5094 – 9mm thick standard cylinder escutcheon to suit 5040 lever handle

B 5094/5194

5094 – 5mm thick oval cylinder escutcheon to suit 5032 lever handle
5194 – 9mm thick oval cylinder escutcheon to suit 5040 lever handle

C 5095/5195

5095 – 5mm thick euro profile escutcheon to suit 5032 lever handle
5195 – 9mm thick euro profile escutcheon to suit 5040 lever handle

Pull Handles

Komfort offers a vast selection of pull handles which are available in many sizes and finish options. The illustrated selection shows the most popular styles. Some have been chosen to complement our lever handles which are shown on pages 4 and 5. Stainless steel pull handles are manufactured from Grade 316 material which is highly resistant to oxidization and corrosion.



A 5054.225

Available finishes:
Satin Stainless Steel
Polished Stainless Steel
Bolt through fixing

Dimensions: 225mm long centre to centre
Also available in 300mm and 600mm lengths

B 5056.150

Available finishes:
Satin Stainless Steel
Polished Stainless Steel
Polished Stainless Steel Textured
Polished Brass
Polish Brass Textured
Straight D handle face fixing

Dimensions: 19mm diameter by 150mm long centre to centre
Also available in 225mm and 300mm lengths

C 5055.225

Available finishes:
Satin Anodised Aluminium
Polished Anodised Aluminium
Satin Stainless Steel
Polished Stainless Steel
Polished Stainless Steel Textured
Polished Brass
Polish Brass Textured
Straight D handle bolt through facing

Dimensions: 19mm diameter by 225mm long centre to centre
Also available in 300mm

D 5057.225

Available finishes:
Satin Stainless Steel
Polished Stainless Steel
Polished Stainless Steel Textured
Polished Brass
Polish Brass Textured
Bolt through fixing

Dimensions: 19mm diameter by 225mm long centre to centre. Also available in 300mm and 700mm lengths

E 5058.300

Available finishes:
Satin Stainless Steel
Polished Stainless Steel
Polished Stainless Steel Textured
Bolt through fixing

Dimensions: 300mm long centre to centre.
Also available in 600mm

Locks & Latches



522/1

75mm SCP 3 lever heavy sprung mortice sash lock
Available finishes:
Satin Anodised Aluminium
Kolourframe (Painted)



CX Lock

European style dual profile (oval/Euro)
with 72mm centres and series of mortice lock cases
Available finishes:
Satin Anodised Aluminium
Kolourframe (Painted)



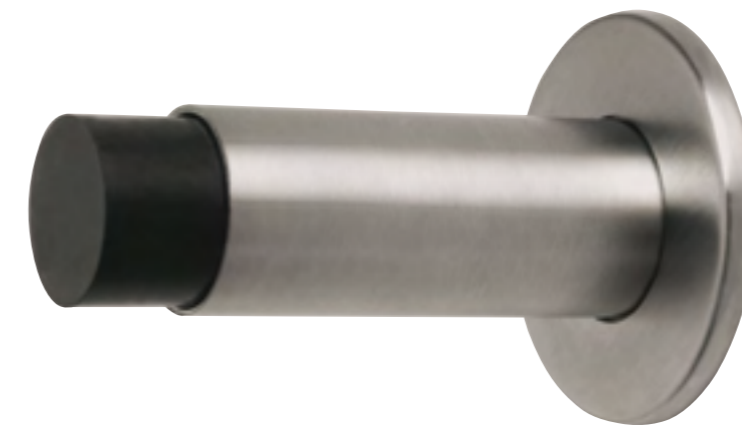
Door Closers & Stops



12

Komfort's door closers and stops combine advanced design and quality with convenient functionality. They are available to accommodate different door weights and door types. The universal overhead closers are manufactured to European Standard BS EN 1154: 1996 and are suitable for most office applications.

60



C



A 5143 or 5144

5143 – Fixed power unit classification EN3. Base unit with black arm suitable for doors up to 60kg and max 950mm wide. Specify with 5148 cover.
5144 – Adjustable power unit classification EN2-5 with cushioned backcheck. Base unit with black arm suitable for doors up to 100kg and max 1250mm wide. Specify with 5148 cover.

Cover finishes:
Satin Stainless Steel
Polished Stainless Steel
Polished Brass
Polished Anodised Aluminium
Kolorframed (painted)

B 5112

80mm projection wall mounted door stop
Available finishes:
Satin Stainless Steel
Polished Stainless Steel
Polished Brass

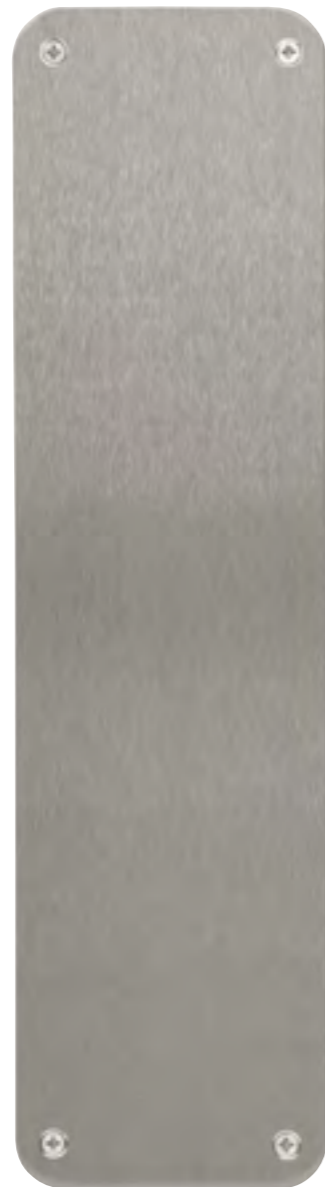
C 5113

32mm diameter floor mounted door stop
Available finishes:
Satin Stainless Steel
Polished Stainless Steel
Polished Brass

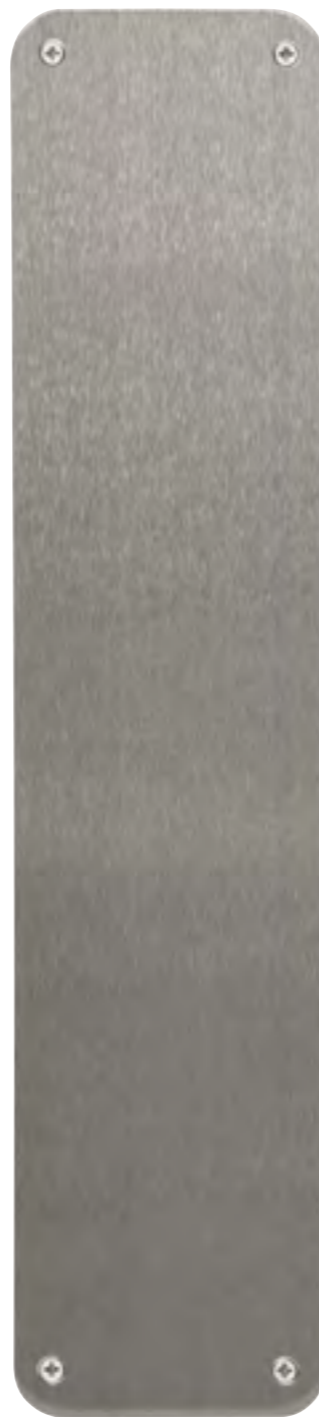
13

Push & Kick Plates

A



B



A

5124

Face fixed finger plate 280 x 75mm

Available finishes:
Satin Stainless Steel
Polished Stainless Steel
Polished Brass

B

5125

Face fixed finger plate 330 x 75mm

Available finishes:
Satin Stainless Steel
Polished Stainless Steel
Polished Brass



C

5126

Face fixed door plate to suit 838mm door leaf x 150mm (Height)

Available finishes:
Satin Stainless Steel
Polished Stainless Steel
Polished Brass

15

14

Komfort's finger and kick plates have radiused corners and are manufactured from 1.5mm thick material. Special sizes are available to order.

Signs & Symbols



A 5119
75mm diameter Fire Door Keep Locked sign in metal/blue with screw face fixing
Available finishes:
Satin Stainless Steel
Polished Stainless Steel
Polished Brass

B 5118
75mm diameter Fire Door Keep Shut sign in metal/blue with screw face fixing
Available finishes:
Satin Stainless Steel
Polished Stainless Steel
Polished Brass

C 5120
75mm diameter Automatic Fire Door Keep Clear sign in metal/blue with screw face fixing
Available finishes:
Satin Stainless Steel
Polished Stainless Steel
Polished Brass

The examples shown are 'International Style' gender symbols

D 5116
75mm diameter Female symbol in metal with screw face fixing
Available finishes:
Satin Stainless Steel
Polished Stainless Steel
Polished Brass

E 5115
75mm diameter Male symbol in metal with screw face fixing
Available finishes:
Satin Stainless Steel
Polished Stainless Steel
Polished Brass

F 5117
75mm diameter Disabled symbol in metal with screw face fixing
Available finishes:
Satin Stainless Steel
Polished Stainless Steel
Polished Brass

Komfort supplies an array of signs and symbols for both advisory and regulatory purposes. The illustrated examples are the most commonly used but additions and alternatives are readily available on request.

Hewi Lever Handles in Nylon



A 4032
20mm diameter lever handle on round rose

B 4082
20mm diameter lever handle on 168 x 46mm
lever lock backplate with standard key aperture

C 4083
20mm diameter lever handle on 168 x 46mm latch
backplate with oval cylinder aperture

D 4095
Euro profile cylinder escutcheon

E 4094
Oval cylinder escutcheon

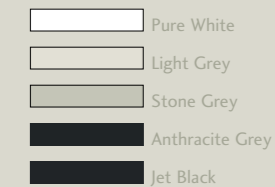
F 4093
Key escutcheon

Available finishes:*

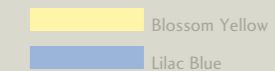
Basic colours



Neutral colours



Pastel colours



* These colours are printed for guidance only and may vary slightly from the actual finish of the product

For designers wishing to add colour to their schemes, Komfort's range of steel core nylon handles provides the perfect solution. They are 20mm in diameter with either rose or backplates. The plastics used are fade resistant, hygienic, stable to chemicals, have very good thermal properties and a high life expectancy.